

# SNAPSHOT

Statement of Financial Position as of December 31, 2013 \*(unaudited)

## ASSETS

Current Assets	\$5,622,595
Long Term Assets	\$8,067,757
<b>TOTAL ASSETS</b>	<b>\$13,690,353</b>

## LIABILITIES

Current Liabilities	\$656,752
Long Term Liabilities	\$106,305
<b>TOTAL LIABILITIES</b>	<b>\$763,058</b>

## NET ASSETS

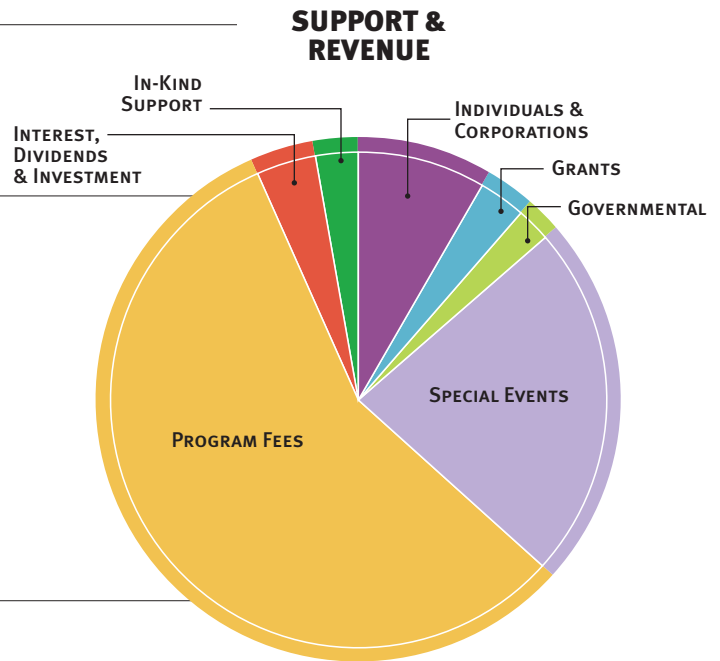
Unrestricted Net Assets	\$6,403,048
Temporarily Restricted Net Assets	\$3,925,356
Permanently Restricted Net Assets	\$2,598,890
<b>TOTAL NET ASSETS</b>	<b>\$12,927,295</b>

**Total Liabilities and Net Assets \$13,690,353**

Statement of Activities for the  
Period Ending December 31, 2013 \*(unaudited)

## SUPPORT & REVENUE

Individuals & Corporations	\$527,410	8.4%
Grants	\$187,165	3.0%
Governmental	\$147,426	2.4%
Special Events	\$1,446,790	23.1%
Program Fees	\$3,543,895	56.7%
Interest, Dividend & Investment	\$239,711	3.8%
In-Kind Support	\$162,500	2.6%
<b>TOTAL SUPPORT &amp; REVENUE</b>	<b>\$6,254,896</b>	<b>100.0%</b>



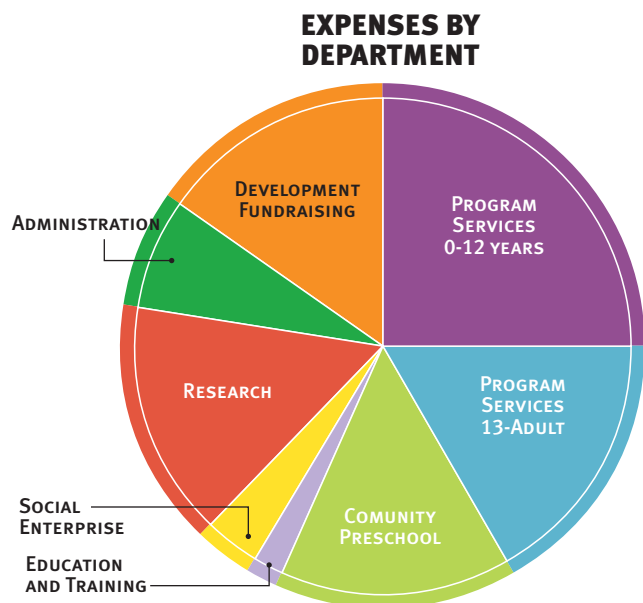
## EXPENSES

Salaries, Benefits & Professional Development	\$4,236,035	68.0%
Contract Labor & Professional Services	\$370,216	5.9%
Program Expenses	\$646,948	10.4%
Postage, Printing & Marketing	\$79,467	1.3%
Occupancy & Communication	\$229,205	3.7%
Special Events Costs	\$150,777	2.4%
In-Kind Expenses	\$162,500	2.6%
Amortization & Depreciation	\$356,513	5.7%
<b>TOTAL EXPENSES</b>	<b>\$6,231,660</b>	<b>100.0%</b>

**TOTAL CHANGE IN NET ASSETS \$23,237**

## EXPENSES BY DEPARTMENT

Programs 0-12	\$1,562,945	25.1%
Programs 13-Adult	\$1,049,046	16.8%
Community Preschool	\$923,975	14.8%
Education & Training	\$130,135	2.1%
Social Enterprise	\$214,298	3.4%
Research	\$952,255	15.3%
Administration	\$462,851	7.4%
Development/ Fundraising	\$936,156	15.0%
<b>TOTAL EXPENSES BY DEPARTMENT</b>	<b>\$6,231,660</b>	<b>100.0%</b>



\*A copy of the fully audited financial statements will be available after June 30, 2014, by contacting Sean Husmoe, Chief Financial Officer, 480.603.3295