

SNAPSHOT

Statement of Financial Position as of December 31, 2014 *(unaudited)

ASSETS

Current Assets	\$4,606,835
Long Term Assets	\$9,119,679
TOTAL ASSETS	\$13,726,514

LIABILITIES

Current Liabilities	\$552,586
Long Term Liabilities	\$106,305
TOTAL LIABILITIES	\$658,891

NET ASSETS

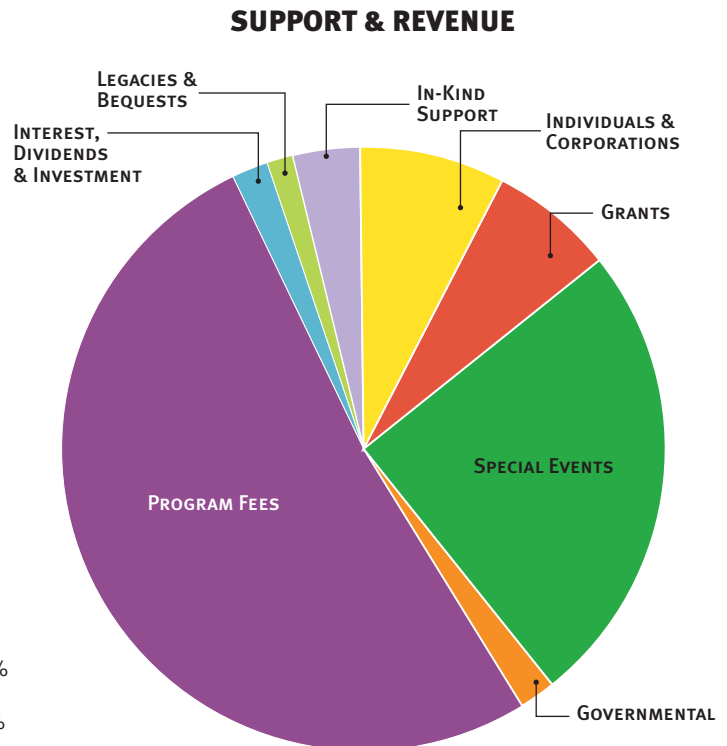
Unrestricted Net Assets	\$5,841,234
Temporarily Restricted Net Assets	\$4,588,261
Permanently Restricted Net Assets	\$2,638,128
TOTAL NET ASSETS	\$13,067,623

Total Liabilities and Net Assets \$13,726,514

Statement of Activities for the Period Ending December 31, 2014 *(unaudited)

SUPPORT & REVENUE

Individuals & Corporations	\$570,153	7.8%
Grants	\$489,362	6.7%
Special Events	\$1,838,873	25.2%
Governmental	\$132,285	1.8%
Program Fees	\$3,766,979	51.6%
Interest, Dividend, & Investment	\$148,502	2.0%
Legacies & Bequests	\$100,000	1.4%
In-Kind Support	\$257,984	3.5%
TOTAL SUPPORT & REVENUE	\$7,304,138	100.0%



EXPENSES

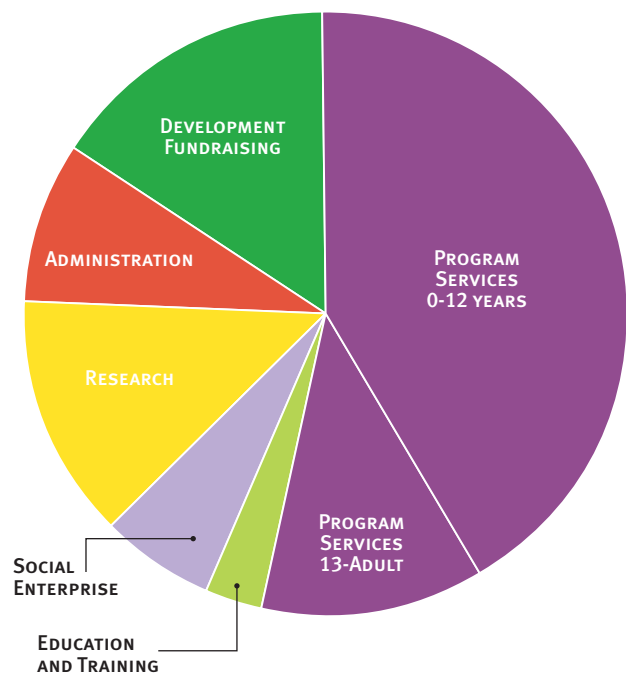
Salaries, Benefits & Professional Development	\$4,840,452	68.2%
Contract Labor & Professional Services	\$413,878	5.8%
Program Expenses	\$653,388	9.2%
Postage, Printing & Marketing	\$160,906	2.3%
Occupancy & Communication	\$227,494	3.2%
Special Events Costs	\$198,567	2.8%
In-Kind Expenses	\$256,359	3.6%
Amortization & Depreciation	\$344,789	4.9%
TOTAL EXPENSES	\$7,095,833	100.0%

TOTAL CHANGE IN NET ASSETS \$208,305

EXPENSES BY DEPARTMENT

Programs 0-12	\$2,961,807	41.7%
Programs 13-Adult	\$860,453	12.1%
Education & Training	\$209,523	3.0%
Social Enterprise	\$426,627	6.0%
Research	\$930,046	13.1%
Administration	\$605,101	8.5%
Development/ Fundraising	\$1,102,276	15.5%
TOTAL EXPENSES BY DEPARTMENT	\$7,095,833	100.0%

EXPENSES BY DEPARTMENT



A copy of the fully audited financial statements will be available after June 30, 2015 by contacting Sean Husmoe, Chief Financial Officer, 480.603.3295