

# SNAPSHOT

Statement of Financial Position as of December 31, 2020 (unaudited)\*

## ASSETS

Current Assets	\$8,454,796
Long Term Assets	\$9,725,610
<b>TOTAL ASSETS</b>	<b>\$18,180,406</b>

## LIABILITIES

Current Liabilities	\$1,423,114
Long Term Liabilities	\$21,261
<b>TOTAL LIABILITIES</b>	<b>\$1,444,375</b>

## NET ASSETS

Without donor restrictions:	
Undesignated	\$10,949,233
With donor restrictions	\$5,786,798
<b>TOTAL NET ASSETS</b>	<b>\$16,736,031</b>

## TOTAL LIABILITIES AND NET ASSETS

	<b>\$18,180,406</b>
--	---------------------

Statement of Activities for the Period Ending December 31, 2020 (unaudited)\*

## SUPPORT & REVENUE

Individuals & Corporations	\$892,533	5.3%
Grants	\$3,395,725	20.2%
Governmental	\$311,293	1.9%
Special Events	\$1,000,419	6.0%
Program Fees	\$10,292,497	61.4%
Interest, Dividend, & Investment	\$845,432	5.0%
In-Kind Support	\$25,535	0.2%
<b>Total Support &amp; Revenue</b>	<b>\$16,763,434</b>	<b>100.0%</b>

## EXPENSES

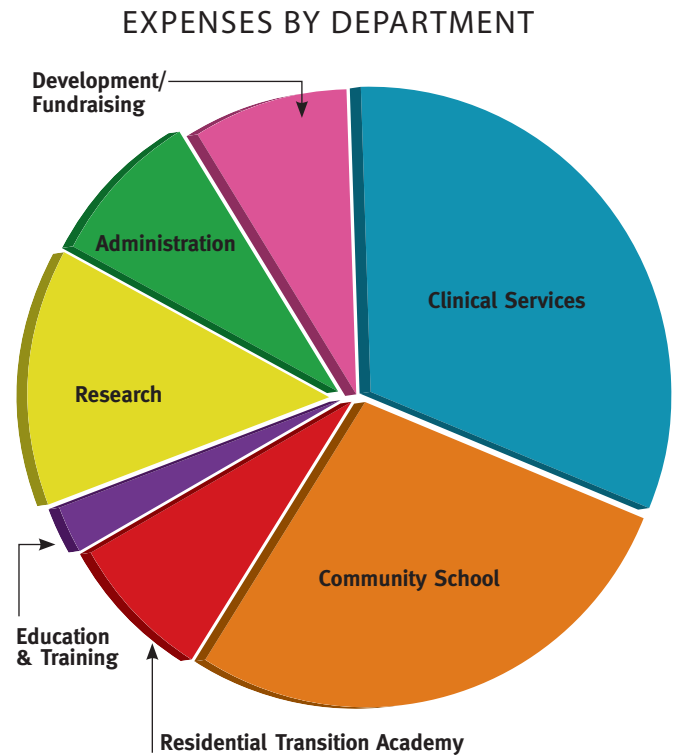
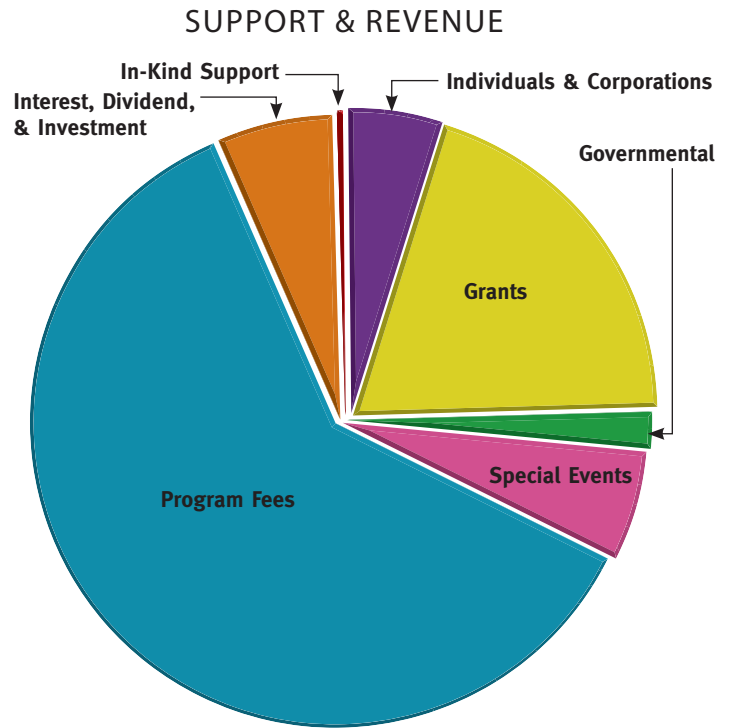
Salaries, Benefits & Professional Development	\$11,827,357	81.7%
Contract Labor & Professional Services	\$419,068	2.9%
Program Expenses	\$971,389	6.7%
Postage, Printing & Marketing	\$266,699	1.8%
Occupancy & Communication	\$529,214	3.7%
Special Events Costs	\$29,257	0.2%
In-Kind Expenses	\$25,535	0.2%
Amortization & Depreciation	\$402,674	2.8%
<b>Total Expenses</b>	<b>\$14,471,193</b>	<b>100.0%</b>

## TOTAL CHANGE IN NET ASSETS

	<b>\$2,292,241</b>
--	--------------------

## EXPENSES BY DEPARTMENT

Clinical Services	\$4,598,114	31.8%
Community School	\$4,016,769	27.8%
Residential Transition Academy	\$1,110,831	7.7%
Education & Training	\$359,666	2.5%
Research	\$1,988,537	13.7%
Administration	\$1,209,152	8.3%
Development/Fundraising	\$1,188,124	8.2%
<b>Total Expenses by Department</b>	<b>\$14,471,193</b>	<b>100.0%</b>



\*A copy of the fully audited financial statements will be available after June 30, 2021, by contacting Andrea Levy, Chief Financial Officer, (602) 340-8717.